

*Electrical maps migration using AutoCAD*  
*- USA Client (Ongoing Project)*

**Project Inputs:**

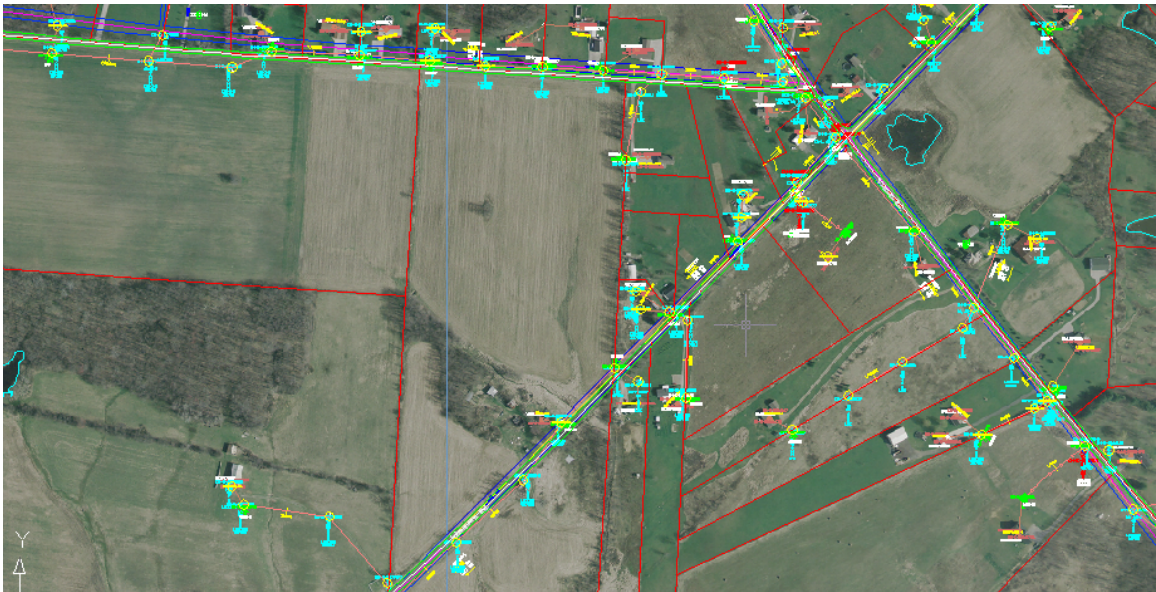
Latest aerial photos which are projected to GPS Co-ordinates.  
Electric facilities which are captured from old traditional projection.

**Brief Project Description:**

- 1) Reorientation of Electric facilities to latest aerial photos which are projected to GPS Co-ordinates.
- 2) Positional Accuracy Improvement of Electric facilities.

**Project Objective:** To migrate all existing electric facilities to match new aerial imagery land base on a pole to pole basis. The finished map should have all the same facilities just a different coordinate location. All wire tics and wire sizes are rotated correctly to align with primary rotation.





Technology: AutoCAD Map 2008