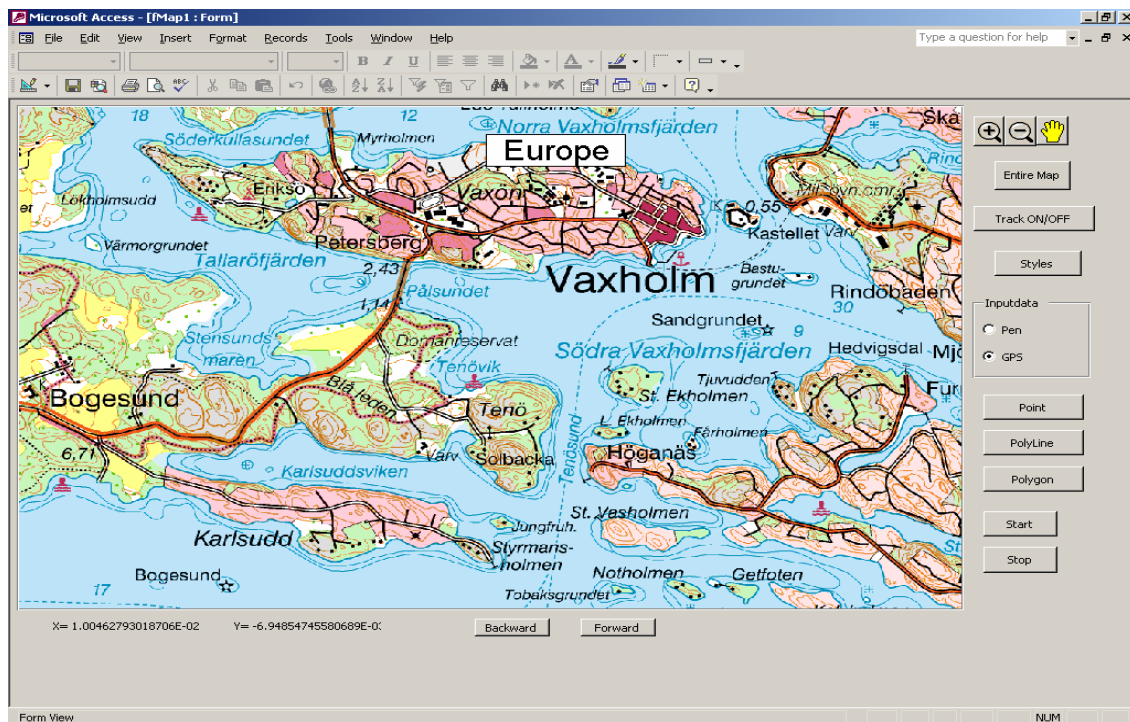


Osprey (Desktop Application Development) - Swedish Client

Brief Description:

The main function for the application is collecting field data with dots, lines and areas. Inputted or via GPS. The position part is help for doing that. When the application starts it will connect to the local database from where it will get GPS data. Using this GPS data application will draw a point on the map as current location of the user and draw a line (as a track) when the user moves.

The user location will be displayed in the center of the map. If point moves 25% from the edge of the map window the map will move to backward. The line will be draw only if the distance between the 2 points is greater than 10 meters (application will provide one option to set this distance by user).



Track ON/OFF:

This option will be used to turn off/on the tracking layer (even in track off mode also the application will draw the dots & tracks, but those are not visible).

Backward & Forward:

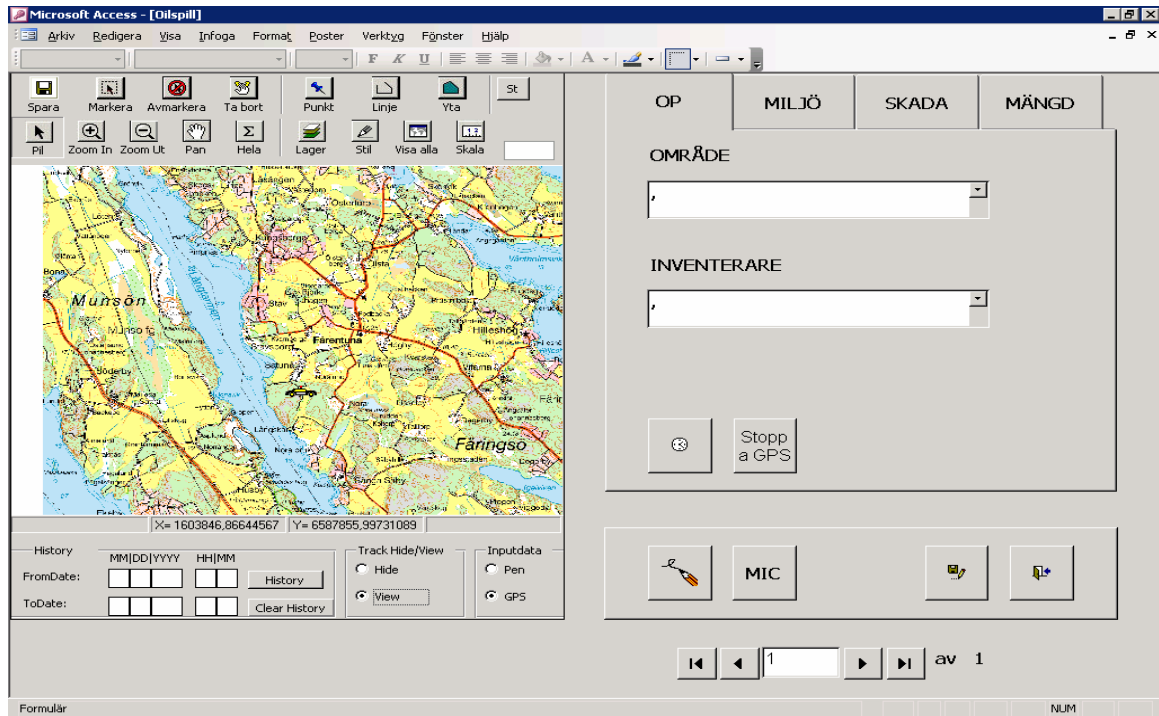
If user wants to see the tracks behind the current visibility of the map window, the map will move back to show the tracks. It can also provide option to move forward once user selected backward.

Drawing:

Application will provide the options to select point, line or polygon for drawing. It also provides 2 types of drawings. One is Pen, using this user can draw point, line or polygon manually.

Another one is GPS, if user selects this option the input data for drawings is from GPS data. If user selects line and press start, it will start drawing a line with the GPS points.

If user select polygon and press start, it will start drawing polygon and when user come to the same point from where he started it will automatically closes the polygon.



Technologies: MapX5, MS Access 2003, ADO