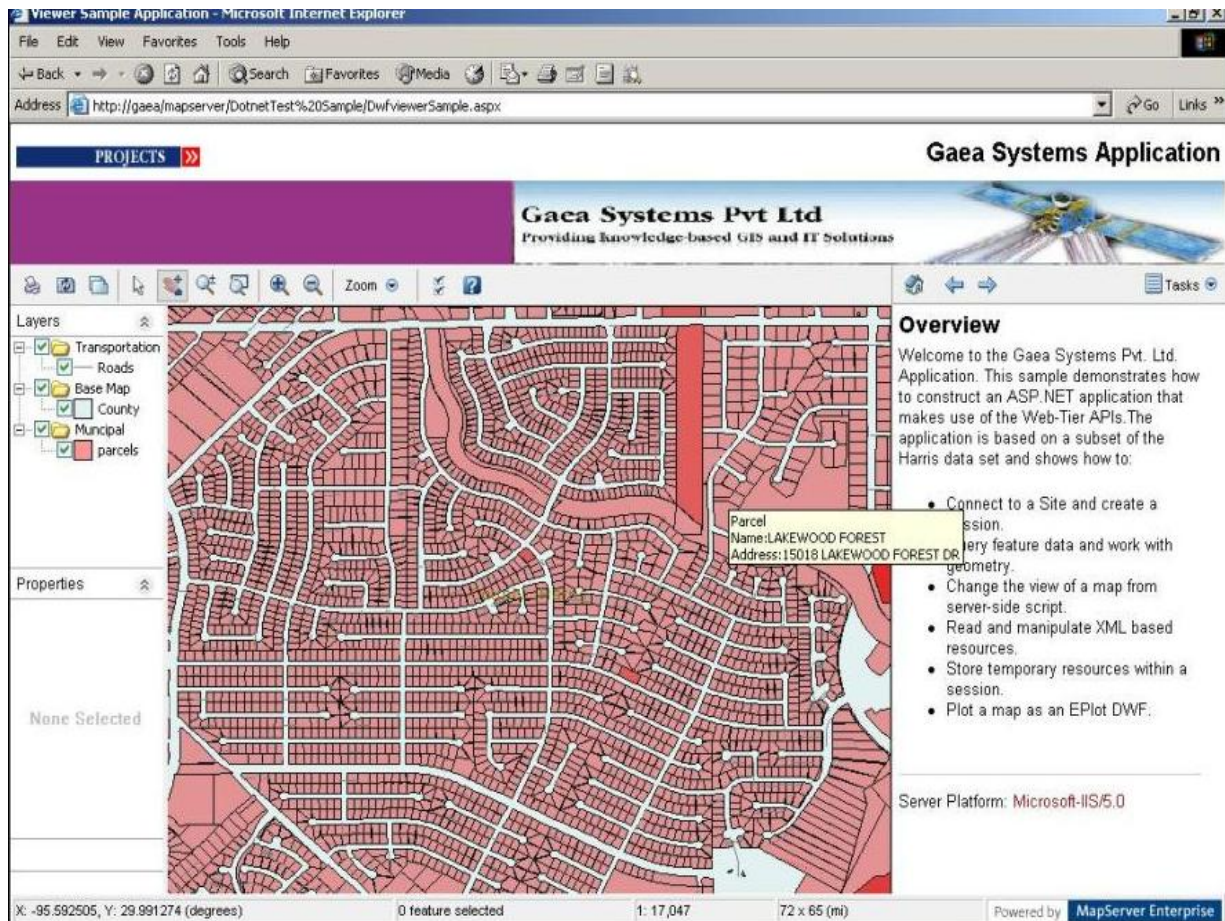


Developing the Parcel Map Data Portal using “AutoDesk MapServer Enterprise”

(THE NEW OPEN SOURCE GIS WEB BASED APPLICATION)



Brief Description:

The Parcel Information System is a Web based application and will comprise of several components which will be integrated as one system that exposes the functionalities.

Application Software consists of a Web server and Application server. Both these servers will have GIS components.

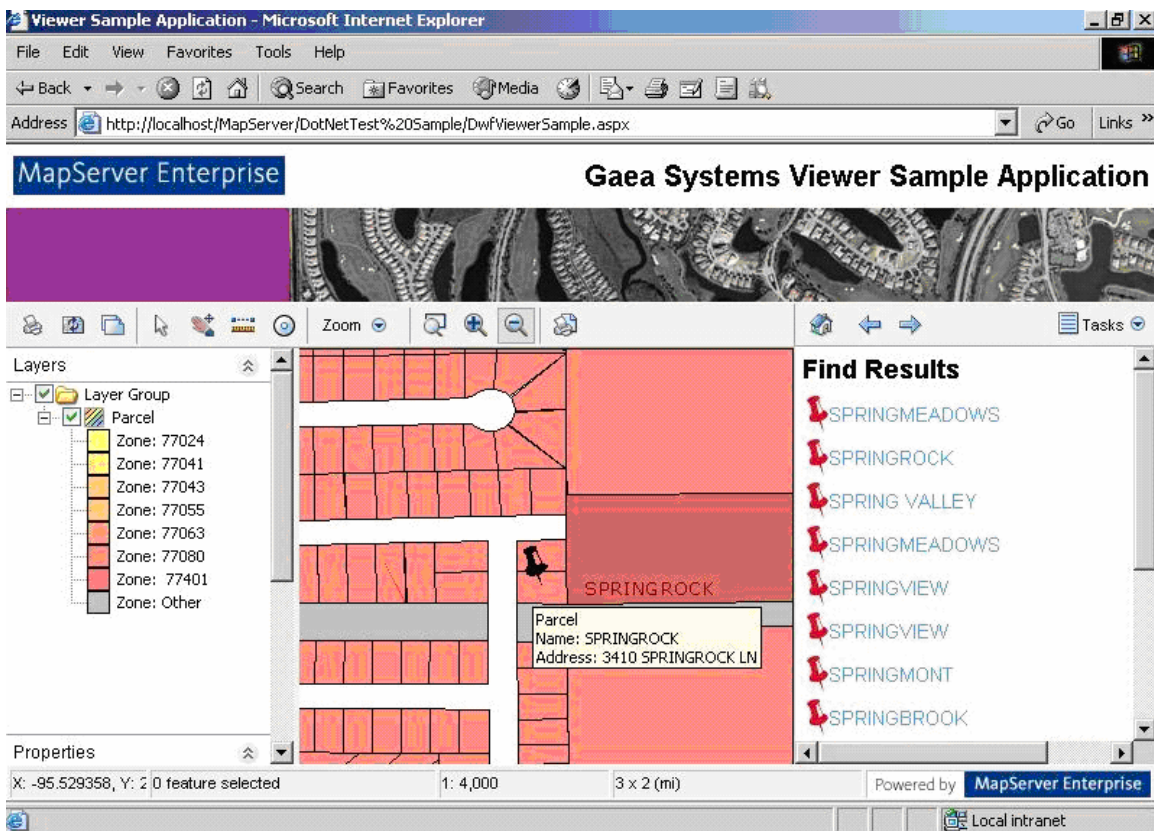
Web Server will run the application using scripting language such as Java Script and presents the application pages to the client. Web server, in turn, will communicate to Application server to fulfill the Client request. After receiving the data from Application server, the web server will format the data and present it to client.

Autodesk MapServer Enterprise 0.9.1 will be used for the development of this application. ESRI (.SHP files and .DBF) and correspond attribute information will be stored in the Map Server.

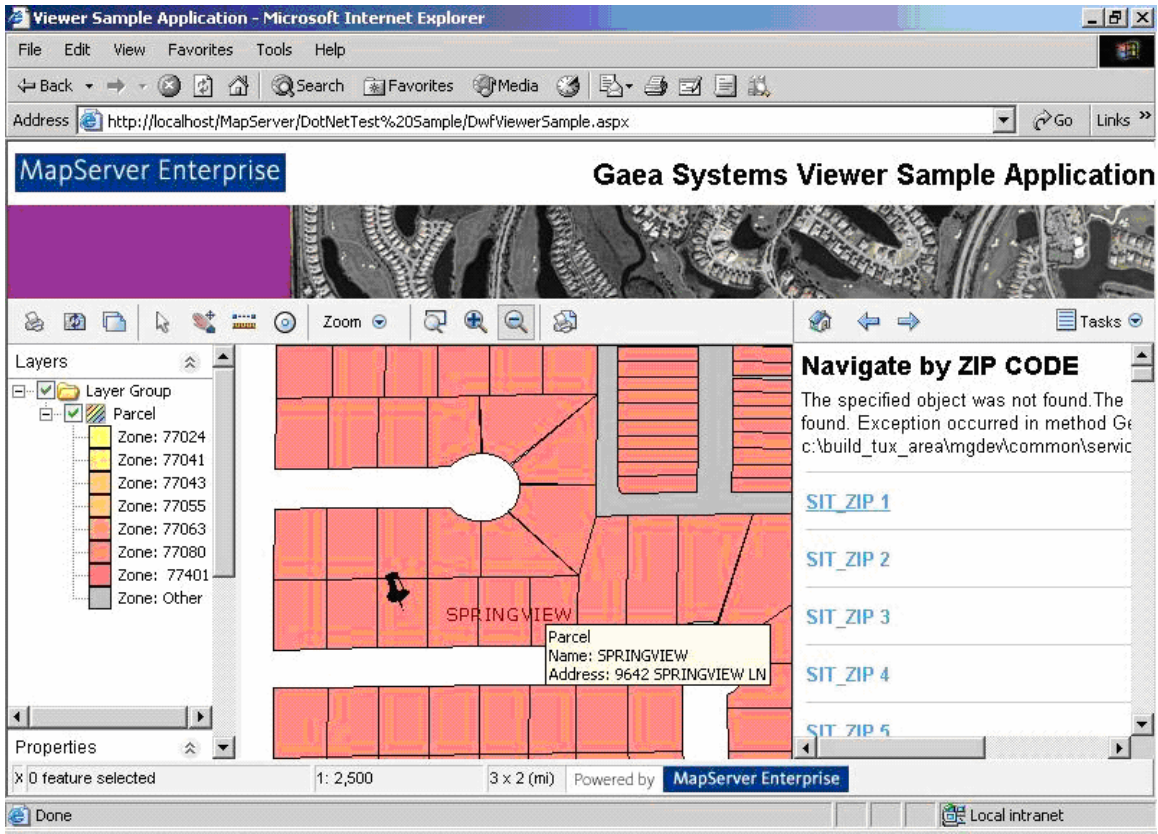
Few of functionalities:

Map and Web Server Mobilization, Establish Basic Working System, Query Retrieve, User Interface, Pan& Zoom&ID, Navigation functionalities, **Geocoding**, Measuring the distance, Thematic Map display, Buffer, Metadata Display, Print layout of user selected maps, Connecting to GOOGLE Maps Interface (<http://maps.google.com/>) through MapServer environment.

Sample of Maps:



Query Interface



Locating the Parcel Address

Technologies: Windows 2000 Advanced Server, IIS5.0, MapServer Enterprise 0.9.1, HTML, JavaScript, ASP.Net, C#.