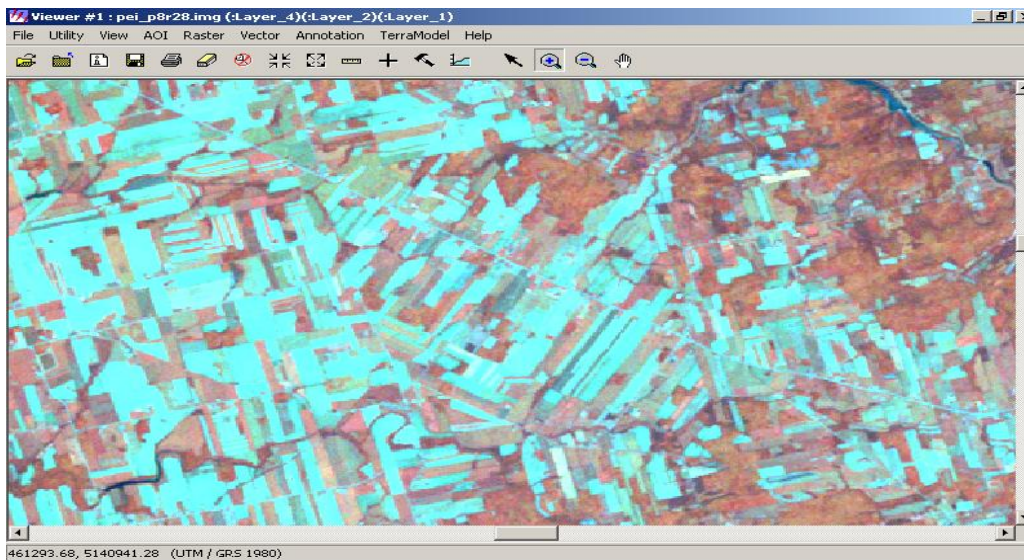


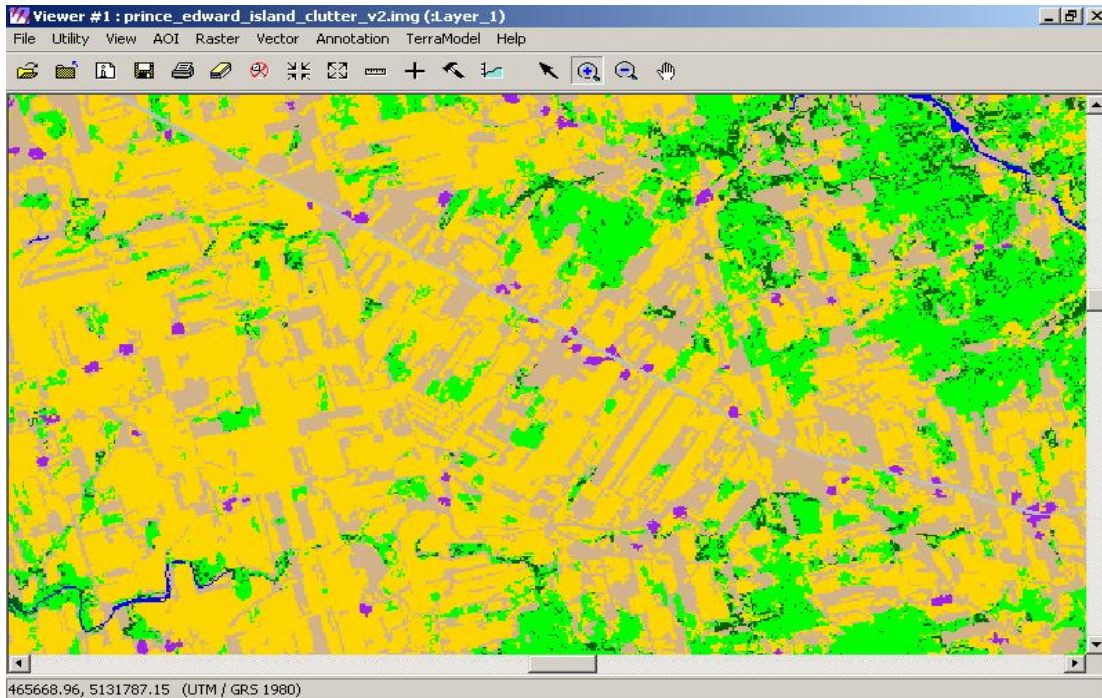
## Thematic Mapping Classification - Canadian Client

Area Details: Prince Edward Island (PEI), Canada

### Scope of Work

The study area of PEI and creation of a 30-meter resolution database for the complete area of interest.





### *Methodology*

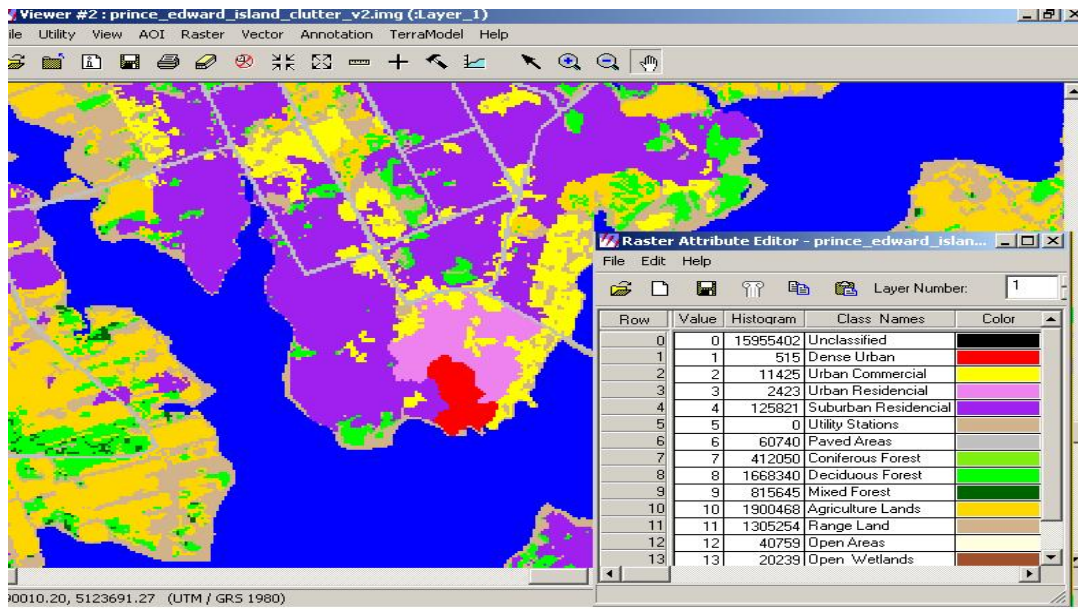
The data creation consists of the following processes:

- **Image Enhancement:**  
The Pre geo-positioned satellite images are enhanced using different enhancement techniques using different image processing software's for better image interpretation.
- **Classification:**  
An unsupervised classification on the satellite images along with different interpretation criteria (tone, texture, shape, pattern, association etc) different classes are delineated.

These classes are handled separately so that there is no mix-up at least in these major classes. The processed layer classes are then mosaiced to generate a single Land Use/ Land Cover layer.

### *Classifications*

Dense Urban, Urban Commercial, Urban Residential, Suburban Residential, Paved Areas, Coniferous Forest, Deciduous forest, Mixed forest, Agriculture, Range land, Open Areas, Open Wetlands, Water, Cloud/Shadow, Barren Surfaces.



Technologies: ERDAS Imagine 9.0